

The Watershed Approach and KASMC

Frank Baker, Chief
Watershed Coordination Section

KASMC Executive Meeting
Murray, KY
July 2013



Themes

- What is the Watershed Approach?
- Thinking through Outputs and Outcomes
- Improving water quality
- Achieving Measurable Water Quality Results



The Art of the Watershed Approach

- Watershed Geographic Focus
- Strategic Planning and Adaptive Management to Reach Goals (Watershed Plan)
- Use Scientific Data, Tools, and Techniques to Develop and Implement Action Plans
- Create Partnerships, Breakdown Silos

**Silos and
Stovepipes**



Results Oriented

- Must Breakdown Stovepipes and Build Partnerships
- 1993 Government Performance and Results Act
 - OMB (Executive)
 - GAO (Legislative)
- Focus on Outcomes... Measurable Results
- Impacting change in all areas of government
 - At EPA it is influencing decisions regarding
 - Regulatory programs
 - Enforcement
 - Grant Awards (Anyone Want a Grant?)

Watershed Approach

Partnerships

+ Geographic Focus (RP Tool)

+ Strong Science & Data

➤ = KASMC



The Little River

- Example of KASMC Collaboration – focused on addressing pathogens, sediment and nitrates.
- Several Partners
 - Utilities
 - Ag Business
 - Cattlemen's Assoc
 - Corn Growers
 - USGS
 - UK – State Cooperative Extension
 - Governor's Ag Policy
 - Christian County Health Dept
 - KDOW
 - And others...

Recovery Potential – Kentucky Pilot and the Watershed Index

- Recovery Potential Tool ~ tool for prioritization and planning – State Tool (built in MS Excel)
- Watershed Index (coming soon)– Nationwide, Internet based, tool that will function much like the recovery potential tool

KASMC and the Watershed Approach

- KASMC workplan currently includes usage of the RP Tool
- Watershed Approach:
 - 1) Use the RP Tool to identify watersheds where KASMC partners will collaborate
 - 2) Collectively develop action plan for KASMC partners in that watershed
 - 3) Implementation of action plan
 - 4) Documentation of water quality improvements

EPA Funding

- EPA Water Focused Funding
 - 106 state program grant
 - 319 Non point source grants
 - 104 Wetlands Grants
 - CWA SRF
- Urban Waters
- Healthy Watersheds Initiative
- Targeted Watershed Grants

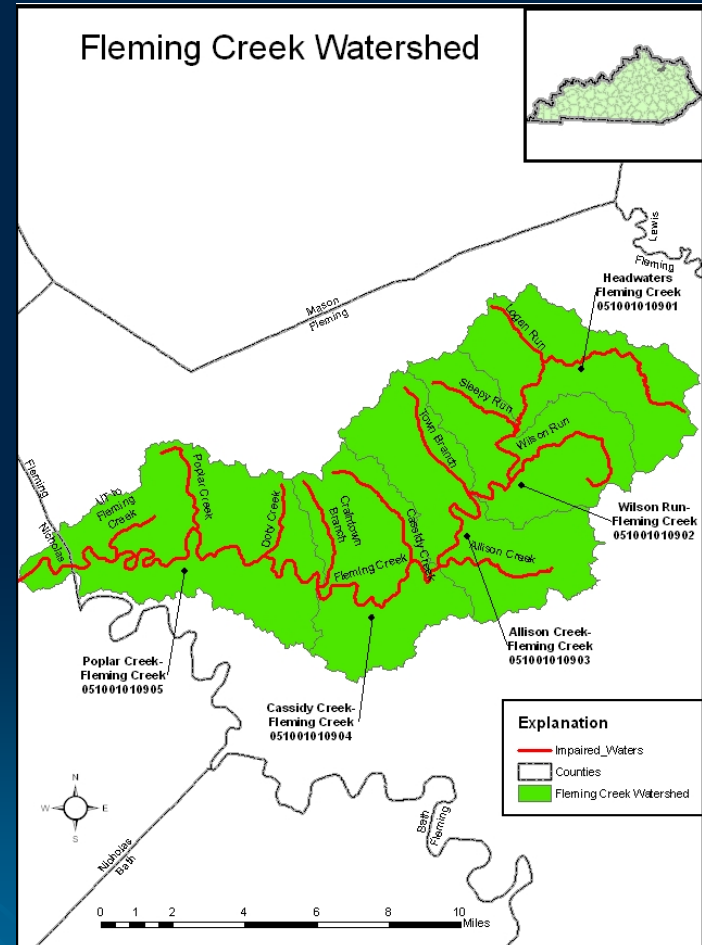
EPA 319 NonPoint Source Funding

- EPA 319(h) Funds
- Remediation and removal of over 355 waterbodies from CWA 303(d) lists of impaired waters (2005-2011).
- Watershed-based planning and implementation has allowed state NPS programs to effectively and cost-efficiently identify and “target” NPS problem areas

Telling the Story

Communicating Success

- 319(h) WQ10 ~
<http://water.epa.gov/polwaste/nps/success319/>
- EPA's Strategic Plan (measure 12) –
Watershed Improvement Summaries
- http://www.epa.gov/region4/water/watersheds/watershed_summaries.html



EPA Personnel Resources

➤ Franklin Baker

- Chief, Watershed Coordination Section
- Baker.franklin@epa.gov
- 404-562-9757

➤ Amy Newbold

- Kentucky Watershed Coordinator
- Newbold.amy@epa.gov
- 404-562-9482

➤ Duane Robertson

- Agriculture Coordinator
- Robertson.duane@epa.gov
- 404-562-9398

➤ Napoleon Kotey

- Kentucky 319 Coordinator
- Kotey.Napoleon@epa.gov
- 404-562-9461

