



Kentucky Agriculture Science and Monitoring Committee

“Dedicated to coordinating agricultural science and monitoring efforts in Kentucky in order to promote sustainable farming and a healthy environment”

The Kentucky Agriculture Science and Monitoring Committee (KASMC) was created in 2009 and now includes over 20 members representing a wide range of state, federal, and local agencies as well as academic institutions and the agricultural industry. Membership continues to expand along with KASMC activities - new members are continually being added. KASMC members work collectively to coordinate resources and expertise in order to address the agricultural science and monitoring needs of the citizens of Kentucky; to date KASMC members have collaborated on numerous proposals, projects, and outreach efforts. KASMC meetings are generally held quarterly at locations across Kentucky along with field trips to agricultural facilities. Subsequent to its formation, KASMC now also serves as a subcommittee under Kentucky's Agriculture Water Quality Authority (AWQA) and provides information to help resource managers steer Kentucky's agricultural policies in that role.

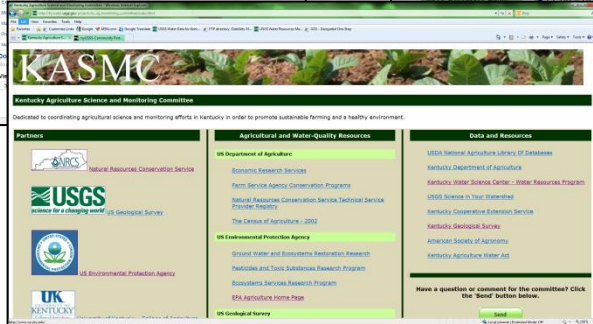
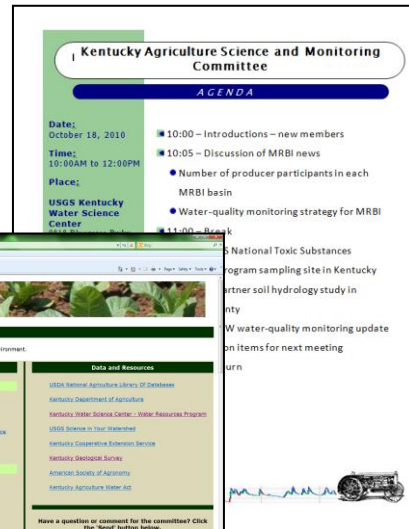
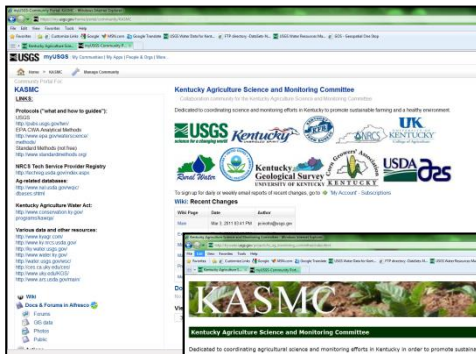
KASMC Members – working together for Kentucky!



Kentucky Agriculture Science and Monitoring Committee Expertise



Collaboration



Additional contacts and information

Visit us on the web:

Pete Cinotto
USGS
9818 Bluegrass Parkway
Louisville, KY 40299
502-493-1930
Email: pcinotto@usgs.gov

Kimberly Richardson
Kentucky Division of Conservation
2 Hudson Hollow
Frankfort, KY 40601
502-564-2320
Email: kimberly.richardson@ky.gov

<http://go.usa.gov/W7VP>

